

# 3M™ Super Close Projection System SCP716/SCP716W

Product Safety Guide

Manuel de sécurité

Sicherheitshandbuch

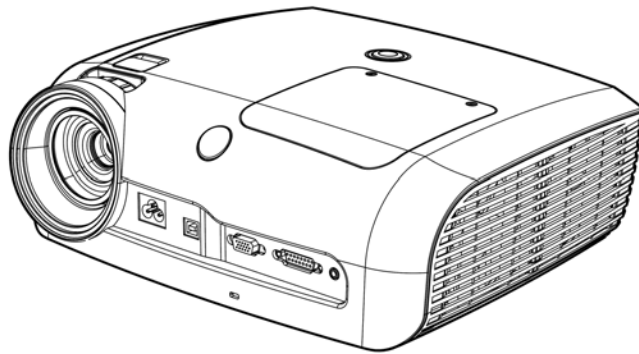
Guía de seguridad del producto

产品安全指南      產品工安手冊

제품안전가이드

製品安全ガイド

Guida alla sicurezza del prodotto



## Warranty; Limited Remedy; Limited Liability

*This warranty applies to the continental US only. The warranty terms, conditions, remedy and limitations may vary in other countries. Contact your local 3M Company for warranty information.*

The 3M SCP700 Series projector (the “3M Product”) is warranted to be free from defects in material or manufacture for a period of three (3) years from the date of purchase or 4,000 hours of usage, whichever occurs first.

All other accessories of the 3M Product (those in the applicable modular configurations), excluding the projector lamps, but including the wall mounts, ceiling mounts, digital annotation sensors, and input/output devices are warranted to be free from defects in material or manufacture for a period of one (1) year from the date of purchase.

The lamp component of the 3M Product is warranted to be free from defects in material and manufacture for a period of ninety (90) days after the date of purchase of the 3M Product or 180 hours of lamp usage, whichever occurs first. This warranty is for parts only and in the case of an approved warranty claim for a lamp; your exclusive remedy will be for a replacement product shipped to your location.

Optional product upgrades and/or accessories that are not sold as part of any modular configuration are subject to individual warranties.

**THE WARRANTIES STATED ABOVE ARE EXCLUSIVE AND ARE MADE IN PLACE OF ANY AND ALL WARRANTIES, EXPRESS OR IMPLIED WARRANTIES OR CONDITIONS, INCLUDING ANY IMPLIED WARRANTY OF MERCHANTABILITY OR FITNESS FOR A PARTICULAR PURPOSE, OR ANY INDUSTRY PRACTICE OR CUSTOM OR TRADE USAGE.**

In the event the 3M Product fails to conform to the above stated warranties within the applicable warranty period, your exclusive remedy shall be, at 3M’s option, to replace or repair the 3M Product or to refund the purchase price of the 3M Product. All replaced parts or products become property of 3M. If the product is repaired, 3M will repair the defective part(s) with a new or used part(s). If the 3M Product is replaced, 3M will replace the 3M Product with the same or equivalent model and with a new or refurbished 3M Product. In the case of an approved warranty claim, the replacement 3M Product will carry only the remaining term of the original 3M Product’s warranty period as stated above. **For warranty service, you must provide proof of the date of the original purchase else the manufacturing code date will be used to establish the start date of the warranty.** The following are exclusions to the above listed warranty:

- a. This warranty does not cover 3M Product that is modified or damaged through improper storage, misuse, abuse, accident, vandalism, improper installation, neglect, improper shipping, damage caused by acts of war, disasters such as fire, flood, and lightning, improper electrical current, software problems, interaction with non-3M products, or service other than by a 3M Authorized Service Provider, neglect or mishandling by any person. Normal wear and tear is not covered under warranty.
- b. 3M Product is designed to operate in the typical indoor environment. This warranty does not cover 3M Product used outside of the following circumstances:
  - 100V-240V AC, 50/60 Hz
  - Office (or similar) Environments with low levels of smoke or air born particulates.

Altitude	Temperature	Humidity
0-4000 ft (normal fan speed)	5°C - 35°C (41°F - 95°F)	25% to 80% (non-condensing)
4000-6000 ft (high fan speed)	5°C - 35°C (41°F - 95°F)	

- Storage conditions: -20°C to 60°C, maximum 40,000 ft.
- c. The Air Intake and Exhaust Vent must be clear of obstructions, including any potential blockage or obstructions caused from a ceiling or other mount. Inadequate air ventilation will cause the 3M Product to malfunction or will cause damage to the 3M Product which will void the warranty.
  - d. This warranty does not cover any additional costs including, but not limited to, those associated with removal, cleaning or installation of the 3M Product, adjustments, (mechanical or electronic) made to the 3M Product or replacing customer replaceable parts like lamps and air filters.
  - e. This warranty covers only normal use of the product. 24-hour-per-day or other excessive continual use causes strain and is not considered normal use.
  - f. This warranty does not cover consumables (e.g., fuses), other than lamps and only as set forth below.
  - g. This warranty is not transferable.
  - h. 3M is not responsible for warranty service should the 3M label or logo or the rating label or serial number be removed unless otherwise stated in writing for the purpose of private labeling for partnership requirements.
  - i. This warranty does not cover postage, insurance, or shipping costs incurred in presenting your 3M Product for warranty service. Said costs are the customer’s responsibility. If a claimed defect cannot be identified or reproduced in service, the customer may be held responsible for cost incurred. Should your warranty upgrade include a “change out” service and the claimed defect cannot be identified or reproduced by the technician, the customer will be responsible for call out costs.

**FAILURE TO FOLLOW THE INSTRUCTIONS CONTAINED IN THE APPROPRIATE 3M PRODUCT MANUAL OR FAILURE TO USE THE 3M PRODUCT IN ACCORDANCE WITH 3M'S INTENDED USE STATEMENT, WILL VOID ALL WARRANTIES AND LIMITED REMEDIES.**

EXCEPT AS SPECIFICALLY STATED IN THE APPLICABLE 3M PRODUCT MANUAL, 3M SHALL NOT BE LIABLE FOR ANY INDIRECT, INCIDENTAL, SPECIAL OR CONSEQUENTIAL DAMAGES (INCLUDING, BUT NOT LIMITED TO, LOSS OF PROFITS, REVENUE OR BUSINESS) RESULTING FROM, OR IN ANY WAY RELATED TO PERFORMANCE, USE OR INABILITY TO USE ANY OF THE 3M PRODUCT. This limitation applies regardless of the legal theory upon which damages are sought.

For warranty support, please call or write your local 3M office or a 3M Authorized Service Provider to obtain RMA # (Return Material Authorization Number) before returning the product. If you are inside the Continental United States of America, please contact 3M Customer Service at 800-328-1371 or email [meetings@mmm.com](mailto:meetings@mmm.com).

**What 3M Will Do To Correct Problems:**

- If your 3M Product requires service, 3M will ask you to bring or send the 3M Product, securely packaged in its original container or equivalent, along with proof of the date of original purchase, to your 3M Service Dealer or 3M Service Center.
- 3M will, at its option, repair or replace the defective unit without charge for parts or labor. Return of the 3M Product will be at 3M's expense.
- When warranty service involves the exchange of the 3M Product or of a part, the item replaced becomes 3M property.
- The exchanged 3M Product or part may be new or previously refurbished to the 3M standard of quality, and at 3M's option, the replacement may be another model of like kind and quality.
- 3M's liability for replacement of the warranted 3M Product or part will not exceed the original retail selling price of the 3M Product. Exchange or replacement products or parts assume the remaining warranty period of the product covered by this limited warranty. However, each replacement lamp carries the limited 90-day warranty stated above.

The 3M logo and 3M are registered trademarks of 3M Company. Vikuiti is a trademark of 3M Company. Digital Light Processing is a trademark or registered trademark of Texas Instruments. All other trademarks or registered trademarks are property of their respective companies. HDMI, the HDMI Logo and High-Definition Multimedia Interface are trademarks or registered trademarks of HDMI Licensing LLC.

## Regulatory Notices

Video signal cables: Only use cables delivered by the manufacturer.

**FCC STATEMENT - CLASS A:** This device complies with Part 15 of the FCC Rules. Operation is subject to the following two conditions:

- (1) This device may not cause harmful interference, and
- (2) This device must accept any interference received, including interference that may cause undesired operation.

**Instructions to Users:** This equipment has been tested and found to comply with the limits for a Class A digital device, pursuant to Part 15 of the FCC Rules. These limits are designed to provide a reasonable protection against harmful interference when the equipment is operated in a commercial environment. This equipment generates, uses, and can radiate radio frequency energy and, if not installed and used in accordance with the instruction manual, may cause harmful interference to radio communications.

Operation of this equipment in a residential area is likely to cause harmful interference in which case the user will be required to correct the interference at his own expense.

**Notice:** This Class A digital apparatus meets all requirements of the Canadian Interference-Causing Equipment Regulations.

Cet appareil numérique de la classe A respecte toutes les exigences du Règlement sur le matériel brouilleur du Canada.

**Instructions to Users:** This equipment complies with the requirements of FCC equipment provided that the following conditions are met. The cables may have to be used with the core set to the projector side. Use the cables which are included with the projector or specified.

**Note:** Changes or modifications not expressly approved by the party responsible for compliance could void the user's authority to operate the equipment.

### CE STATEMENT

**Electromagnetic Compatibility Statement:** Meets 2004/108/EC Directive

**Low Voltage Directive:** Meets 2006-95-EC Directive.

**WEEE STATEMENT:** The following information is only for EU-members States: The mark shown to the right is in compliance with Waste Electrical and Electronic Equipment Directive 2002/96/EC (WEEE). The mark indicates the requirement NOT to dispose the equipment as unsorted municipal waste, but use the return and collection systems according to local law.



**RoHS STATEMENT:** 3M Projection Systems can provide RoHS certification for products meeting the RoHS directive.<sup>1</sup>

European (EU) Restriction of Hazardous Substances (RoHS) Directive, 2002/95/EC.

<sup>1</sup> RoHS compliant means that the product or part does not contain any of the substances in excess of the following maximum concentration values in any homogeneous material, unless the substance is in an application that is exempt under RoHS, as amended:(a) 0.1% (by weight) for lead, mercury, hexavalent chromium, polybrominated biphenyls or polybrominated diphenyl ethers; or (b) 0.01% (by weight) for cadmium. This information represents 3M's knowledge and belief, which may be based on information provided by third party suppliers to 3M.

## Important Notice

All statements, technical information, and recommendations related to 3M's products are based on information believed to be reliable, but the accuracy or completeness is not guaranteed. Before using this product, you must evaluate it and determine if it is suitable for your intended application. You assume all risks and liability associated with such use. Any statements related to the product which are not contained in 3M's current publications, or any contrary statements contained on your purchase order shall have no force or effect unless expressly set forth in a written agreement signed by an authorized officer of 3M.

## Safety Information

Please read, understand, and follow all safety information contained in these instructions prior to the use of this projector. Retain these instructions for future reference.

Before operating the machine, please read the entire manual thoroughly. This projector was designed, built and tested for use indoors, using 3M lamps and hardware. The use of other replacement lamps, outdoor operation or different voltages has not been tested and could damage the projector or peripheral equipment and/or create a potentially unsafe operating condition.

### Explanation of Signal Words and Symbols in Safety Labels and Instructions

**WARNING:** Indicates a potentially hazardous situation, which if not avoided, could result in death or serious injury and/or property damage.

**CAUTION:** Indicates a potentially hazardous situation, which if not avoided, may result in minor or moderate injury and/or property damage.



**Warning:** Hazardous Voltage



**Warning:** Hot Surface High Temperature Lamp



**Warning:** High Pressure



**Attention:** Read Accompanying Documentation



## WARNING

### To reduce the risk associated with hazardous voltage:

- Do not operate this projector in wet environments or outdoors.
- Do not modify this projector or power cord.
- Do not remove any screws other than those specified in the lamp replacement instructions.
- Do not attempt to service the projector other than the lamp cartridge. There are no user serviceable parts inside the projector.
- Contact a 3M authorized service provider for service.
- Disconnect power cord when the projector is not in use for extended periods of time, during lamp replacement, and while cleaning.
- Do not allow water or other liquids to enter the projector.

### To reduce the risk associated with hazardous voltage and/or fire:

- Replace power cord if damaged.
- Contact a 3M authorized service provider if the projector becomes damaged.
- Use a grounded extension cord with a rating at least equal to that of the projector.
- Connect this projector to a grounded outlet.

### To reduce the risk associated with choking:

- Keep the battery and battery cover away from children and pets.

### To reduce the risk associated with lamp rupture related hazards:

- In event of lamp rupture, call 3M authorized service provider for repair. Ruptured lamp repair is not user serviceable.
- Wash your hands thoroughly if contact with ruptured lamp debris has taken place.
- Ventilate the area where the lamp rupture occurs. The lamp operates at high temperature.

### To reduce the risk associated with hazardous voltage, impact, tripping, or intense visible light:

- Do not use this projector around unsupervised children.

### To reduce the risk associated with sharp objects, premature lamp failure, exposure to mercury:

- Always handle the fragile lamp module with care.
- Replace the lamp module when the lamp replacement message appears.
- Never replace the lamp module with a previously used lamp module.
- Remove the projector from the ceiling or wall mount before replacing the lamp.



## CAUTION

### To reduce the risk associated with intense visible light:

- Avoid looking directly into the projector lens while the lamp is on.

### To reduce the risk associated with impact of a falling projector:

- Use only the 3M brand wall/ceiling mounting hardware kit if wall or ceiling mounting is desired.
- Installation of the 3M brand wall/ceiling kit must only be performed by qualified personnel.
- Adhere strictly to the proper installation procedure as outlined in the installation instructions when installing the 3M Wall/Ceiling kit.
- Always operate the unit on a flat and sturdy surface.

### To reduce the risk associated with explosion, and/or chemicals from leaking battery:

- Use only with battery type AAA.
- Orient the battery's plus (+) and minus (-) terminals according to the markings found on the remote control.
- Do not leave the battery in the remote for an extended period of time.
- Do not heat, disassemble, short, recharge, or expose the batteries to fire or high temperature.
- Do not carry batteries loose in your pocket or purse.
- Avoid eye and skin contact in the event that battery would leak.
- Do not mix used and new batteries.

### To reduce the risk associated with tripping, and/or impact:

- Position the power cord and cables so that they can not be tripped over.

### To reduce the risk associated with environmental contamination:

- Dispose of mercury lamp, exhausted batteries, and other electronic components in accordance with applicable federal, state and local regulations.

### To reduce the risk associated with hot surface of lamp cartridge:

- Before replacing the lamp, allow the lamp to cool for 60 minutes and then unplug the projector from the electrical outlet.

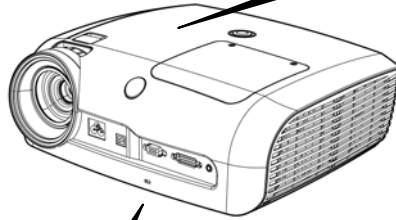
### To reduce the risk associated with environmental contamination due to mercury:

- Hg: Lamp contains mercury. Don't throw in trash. Dispose according to local, state, or federal laws. See [www.lamprecycle.org](http://www.lamprecycle.org) or call 1-800-328-1371.

## SAVE THESE INSTRUCTIONS

## Location of Safety Labels

The following safety labels are used on this product.

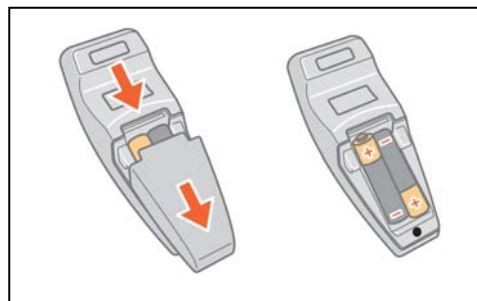


<p><b>Warning:</b> Read Manual Before replacing Lamp.</p> <p><b>ADVERTENCIA:</b> Lea el manual antes de cambiar la lámpara.</p> <p><b>AVIS:</b> Lire le manuel avant de remplacer la lampe.</p> <p><b>WARNUNG:</b> Lesen Sie im Handbuch nach, bevor Sie die Lampe ersetzen.</p> <p><b>AVVERTENZA:</b> Leggere il manuale prima di sostituire la lampada.</p> <p><b>警告:</b> ランプを交換する前に説明書を読んでください。</p> <p><b>警告:</b> 在更換投影燈之前，請閱讀產品手冊。</p> <p><b>警告:</b> 更換投影燈之前，請閱讀產品手冊。</p> <p><b>경고:</b> 램프를 교체하기 전에 매뉴얼을 읽으십시오.</p>

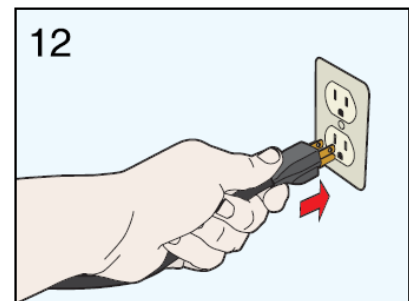
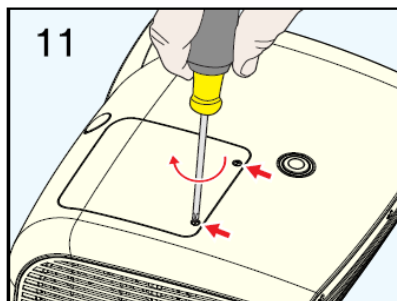
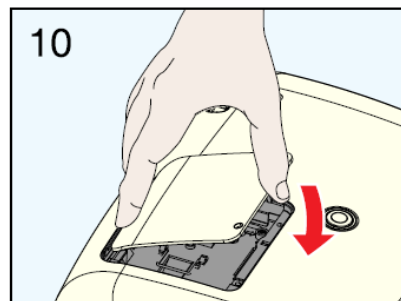
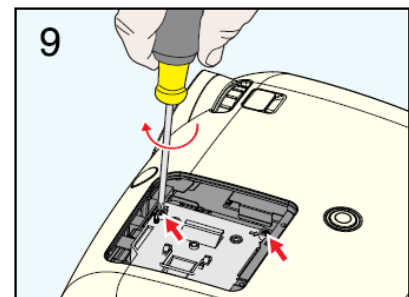
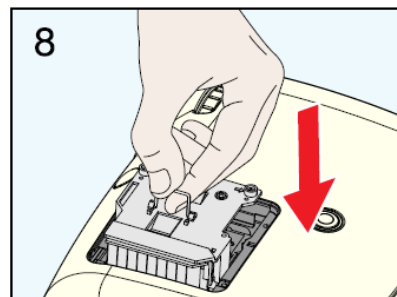
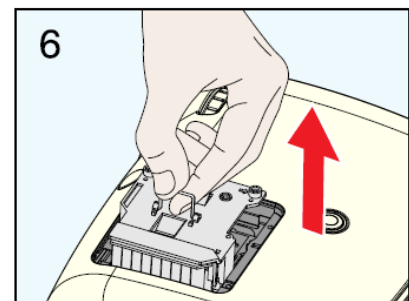
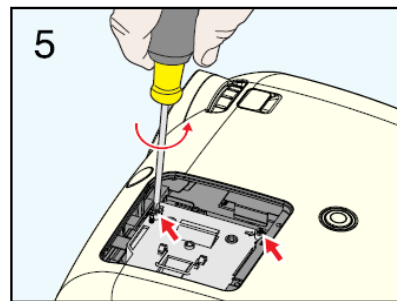
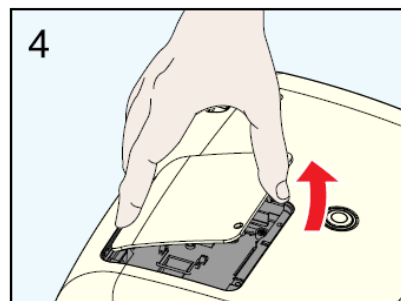
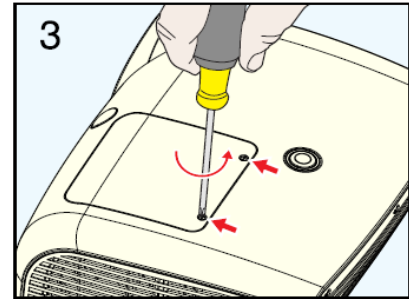
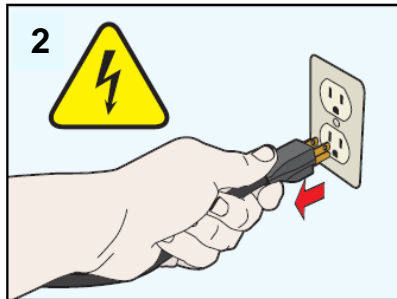
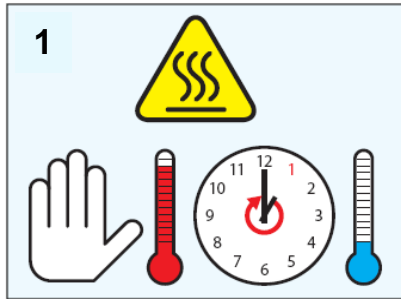
	<p><b>WARNING:</b></p> <ul style="list-style-type: none"> <li>BEFORE OPERATING, PLEASE READ OWNER'S MANUAL.</li> <li>DO NOT REMOVE SCREWS EXCEPT LAMP COVER SCREWS.</li> <li>DO NOT BLOCK VENTING OPENINGS.</li> </ul> <p><b>AVIS:</b></p> <ul style="list-style-type: none"> <li>VEUILLEZ LIRE LE MODE D'EMPLOI AVANT L'USAGE.</li> <li>NE PAS RETIRER LES VIS A L'EXCEPTION DES VIS DU COUVERCLE DE LAMPE.</li> <li>NE BOUCHEZ PAS LES ORIFICES DE VENTILATION.</li> </ul> <p><b>WARNUNG:</b></p> <ul style="list-style-type: none"> <li>VOR DEM EINSATZ DIE BETRIEBUNGSANLEITUNG LESEN.</li> <li>KEINE SCHRAUBEN AUSSER DEN LAMPENDECKELSCHRAUBEN ENTFERNEN.</li> <li>LUFTÜNGSÖFFNUNGEN NICHT BLOCKIEREN.</li> </ul> <p><b>警告:</b></p> <ul style="list-style-type: none"> <li>ご使用になる前に、取扱説明書をお読みください。</li> <li>ランプカバー以外のネジを取り外さないでください。</li> <li>通気孔をふさがないでください。</li> </ul>	<p><b>LAMP REPLACEMENT CAUTION</b></p> <p>BEFORE REMOVING THE SCREWS, DISCONNECT POWER CABLE. HOT SURFACE INSIDE ALLOW 1 HOUR TO COOL BEFORE REPLACING THE LAMP. HANDLE WITH CARE. RISK OF EXPLOSION. SEE OWNER'S MANUAL.</p> <p><b>PRECAUTIONS LORS DU REMPLACEMENT DE LA LAMPE</b></p> <p>DEBRANCHER LE CABLE D'ALIMENTATION AVANT DE RETIRER LES VIS. L'INTERIEUR DU BOITIER ETANT EXTREMEMENT CHAUD, ATTENDRE 1 HEURE AVANT DE PROCEDER AU REMPLACEMENT DE LA LAMPE. A MANIPULER AVEC PRECAUTION. RISQUE D'EXPLOSION. SE REPORTER AU MODE D'EMPLOI.</p> <p><b>ACHTUNG BEIM LAMPENAUSTAUSCH</b></p> <p>VOR DEM ENTFERNEN DER SCHRAUBEN DAS NETZKABEL ABTRENNEN. HEISSE OBERFLÄCHEN IM INNEREN BENÖTIGEN 1 STUNDE ZUM ABKÜHLEN, BEVOR DIE LAMPE ERSETZT WERDEN KANN. VORSICHT BEIM UMGANG. EXPLOSIONSGEFAHR. SIEHE BETRIEBUNGSANLEITUNG.</p> <p><b>ランプ交換の注意</b></p> <p>ランプ交換をおこなう前に、必ず電源プラグをコンセントから抜いてください。内部は高温ですので、1時間以上放置してください。ランプは使用中に、まれに割れる場合があります。ランプ交換の際、ガラスの破片だけがをしないよう注意してください。詳しくは取扱説明書をご覧ください。</p>
<p><b>Hg: LAMP CONTAINS MERCURY. Don't throw in trash.</b>                  Dispose according to local, state, or federal laws. See <a href="http://www.lamprecycle.org">www.lamprecycle.org</a> or call 1-800-328-1371.</p>		

## Remote Control Battery Replacement

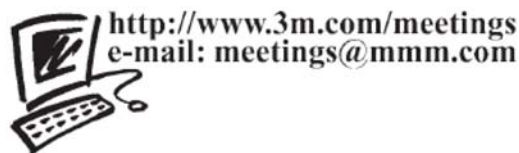
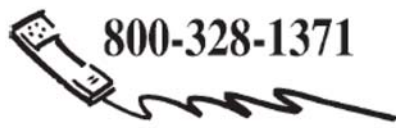
Use battery type AAA.



# Lamp Replacement



## Technical Support Contact:



3M Austin Center  
 Building A147-5N-01  
 6801 River Place Blvd.  
 Austin, TX 78726-9000

3M Canada  
 P.O. box 5757  
 London, Ontario  
 N6A 4T1

3M Mexico, S.a. de C.V  
 Apartado Postal 14-139  
 Mexico, D.F. 07000  
 Mexico

3M Europe  
 Boulevard de l'Oise  
 95006 Cerge Pontoise Cedex  
 France

Please recycle.  
 Litho in USA  
 ©3M 2009. All Rights Reserved.  
 78-6971-1453-2 Rev. C (10/2009)